

FLOOR PLAN SCHEDULE

ID	DESCRIPTION	DETAIL
	96'-7 1/2" DIAGONAL OUT-TO-OUT OF FRAMING	
A	FS888 FIELD FABRICATED STUB COLUMN	F0344, F0354
C	#153 RIDGECAP	OA050
D	24" SIDEWALL OVERHANG	JF154
E	24" FLYING GABLE ENDWALL OVERHANG	IF642, IG625
F	24" ENDWALL OVERHANG	IG235, IG246
G	12" PORCH OVERHANG	MF409, MF481
H	4-PLY 2X12 DFL/SYP M-23/2400 MSR 170-7/8"	FO372
J	RS16-R STEEL CORNER BRACE	HA524
K	2 x 6 DIAGONAL GABLE BRACE	HB100
L	2 x 10 SW WIND HEADER	HD660
M	2 x 8 VERTICAL STIFFENER	HB660
N	2 x 6 DIAGONAL GABLE X-BRACE	HB101
P	2X8 MCA-C TREATED SILL PLATE	FF206, FF210
Q	2X6 MCA-C TREATED SILL PLATE	FF206, FF210
R	ROOF TO WALL TRANSITION	GA642, JF442
S	36" MANSARD	GC202
T	8" WIDE DORMERS, SEE SECTIONS	
T1	1-PLY 54'-0" TRUSS 2x8 TC/2x6 BC	HD631
T2	1-PLY 30'-0" TRUSS 2x8 TC/2x6 BC	HD631
T3	8'-4" PORCH TRUSS 2x10 TC/2x6 BC	SEE SECTIONS
T4	7' 10-1/2" DROP GABLE PORCH TRUSS 2x6 TC/2x6 BC	FL390
T5	7' 10-1/2" GABLE PORCH TRUSS 2x6 TC/2x6 BC	REF. FL390
TG	1-PLY 54'-0" TRUSS 2x10 TC/2x8 BC	FF302
TR	1-PLY 30'-0" TRUSS 2x8 TC/2x6 BC	FF302

COLUMN SCHEDULE

ID	PART	SHAPE	LENGTH	BASE	FOOTING	TYPE	BAGS	NOTES
1	691192	FS888	22'-0"	-52	4 x 17	PRECAST	0	EF131
2	692252	FE888	22'-0"	-52	4 x 17	PRECAST	0	EF131
3	C003	FE888	28'-0"	-52	4 x 17	PRECAST	0	EF131
4	C004	FE888	32'-0"	-52	4 x 17	PRECAST	0	EF131
5	C009	FE888	34'-0"	-52	4 x 17	PRECAST	0	EF131
6	C007	FE888	36'-0"	-52	4 x 17	PRECAST	0	EF131
7	C050	FS888	15'-6"					FF223
8	C051	FS888	13'-7"					FF223
11	C012	FS888J8	22'-0"	-52	9 x 24	PRECASTPLUS	4	EF122
12	C014	FS888J8	22'-0"	-52	4 x 17	PRECAST	0	EF131
14	691168	FS666	18'-0"	-52	4 x 17	PRECASTPLUS	2	EF122
15	C053	FS666	8'-1"					FF223
16	695220	FE666	10'-0"					FF221
17	C052	FE666	14'-0"					FF223
18	681804	f6FS444	14'-0"	-52	4 x 17	PRECAST	0	EF131
19	692218	FE666	18'-0"	-52	4 x 17	PRECAST	0	EF131
20	695254	FE888	14'-0"					FF221
21	695256	FE888	16'-0"					FF221

OPENING SCHEDULE

ID	MODEL	COLOR	NOMINAL	ROUGH	FRAME	FINISH
A1	WINDOW VINYL SLIDER THERMAL, PRAIRIE GRID	B Wht	48x48	47.5x47.75	KC430, KB431	KB471
B1	WALK DOOR - FURNISHED BY OTH		36x80	36x80	KC431	KC471
C1	12' HIGH OVERHEAD DOOR OPENI		168x144	168x144	LK207	LK424, LK464
D1	14' HIGH OVERHEAD DOOR OPENI		240x168	240x168	LK253, LK269	LK424, LK464
E1	WINDOW VINYL FIXED THERMAL PRAIRIE GRID	B Wht	60x48	59.5x47.75	KC430, KB432	KB471
F1	8' HIGH OVERHEAD DOOR OPENI		108x96	108x96	LK253	LK424, LK464
G1	WALK DOOR - FURNISHED BY OTH		72x80	72x80	KC431	KC471
H1	WALK DOOR - FURNISHED BY OTH		36x80	36x80	KC431	KC471

FLYING GABLE ANGLES

INPUT		
ROOF PITCH	6	12
GW - GABLE WIDTH	120	INCHES
W2-W1 - PROJECTION	36	INCHES
SLOPE FACTOR	1.1	
FLYING GABLE SL LEN	67.1	INCHES
OUTPUT		
PURLIN ANGLE "A"	28.2	DEGREES
PURLIN ANGLE "B"	15.0	DEGREES
PEAK		
PEAK ANGLE "A"	28.2	DEGREES
PEAK ANGLE "B"	26.6	DEGREES
GF - LENGTH	76.1	INCHES
JUNCTION		
JUNCTION ANGLE "A"	61.8	DEGREES
JUNCTION ANGLE "B"	26.6	DEGREES

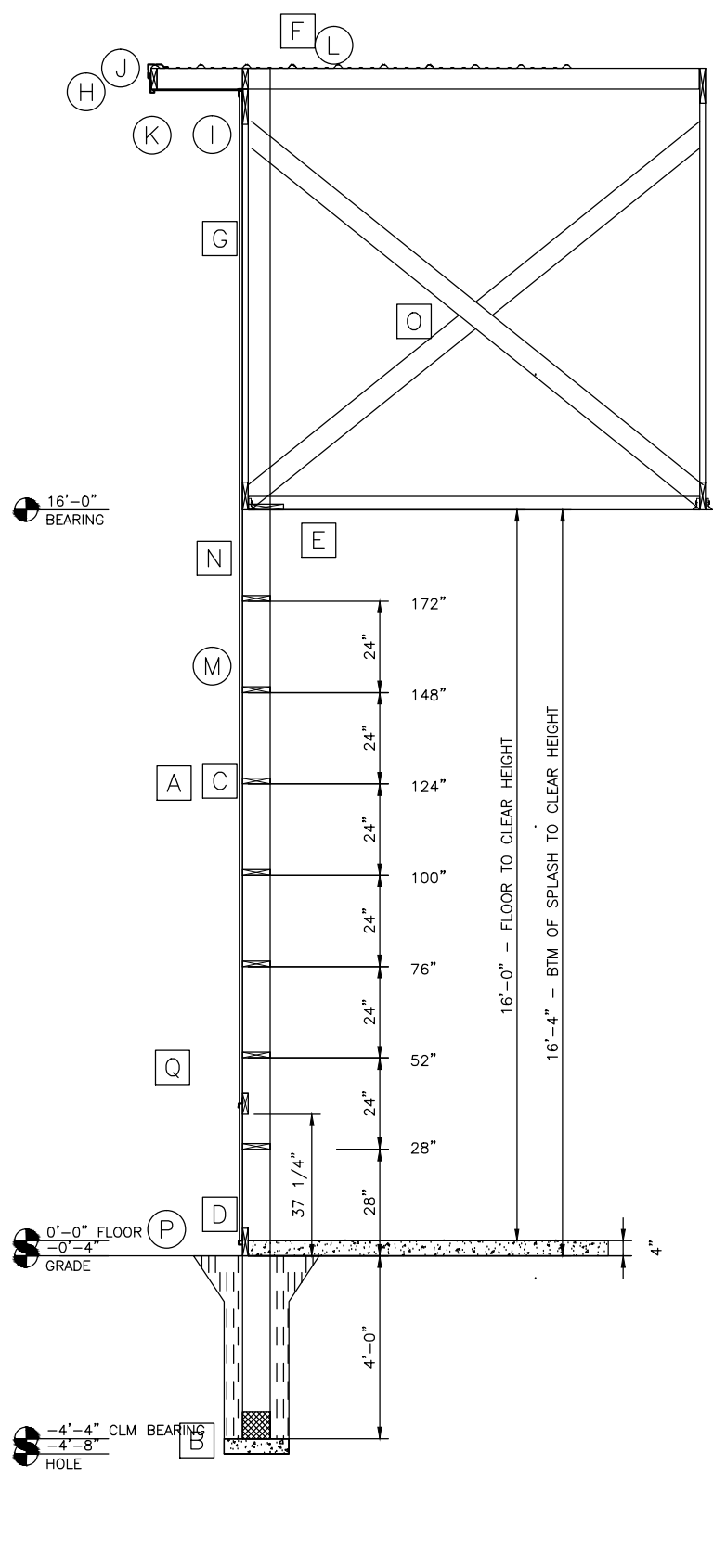
SEE DETAIL IG625 FOR LOCATION OF NUMBERS AND ANGLES SHOWN ABOVE.

END SECTION SCHEDULE

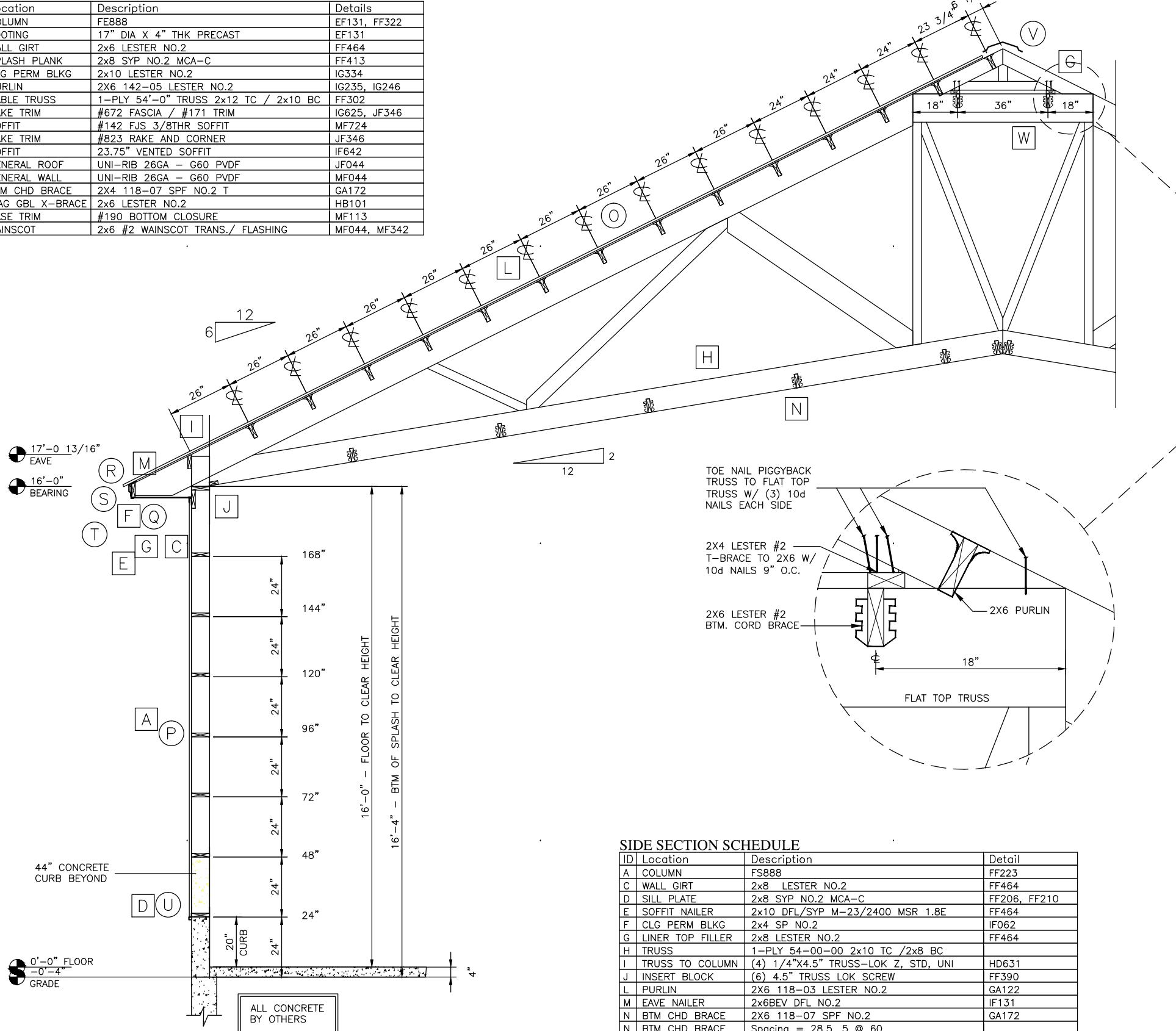
ID	Location	Description	Details
A	COLUMN	FE888	EF131, FF322
B	FOOTING	17" DIA X 4" THK PRECAST	EF131
C	WALL GIRT	2x6 LESTER NO.2	FF464
D	SPLASH PLANK	2x8 SYP NO.2 MCA-C	FF413
E	CLG PERM BLKG	2x10 LESTER NO.2	IG334
F	PURLIN	2x6 142-05 LESTER NO.2	IG235, IG246
G	GABLE TRUSS	1-PLY 54'-0" TRUSS 2x12 TC / 2x10 BC	FF302
H	RAKE TRIM	#672 FASCIA / #171 TRIM	IG625, JF346
I	SOFFIT	#142 FJS 3/8THR SOFFIT	MF724
J	RAKE TRIM	#823 RAKE AND CORNER	JF346
K	SOFFIT	23.75" VENTED SOFFIT	IF642
L	GENERAL ROOF	UNI-RIB 26GA - G60 PVDF	JF044
M	GENERAL WALL	UNI-RIB 26GA - G60 PVDF	MF044
N	BTM CHD BRACE	2x4 118-07 SPF NO.2 T	GA172
O	DIAG GBL X-BRACE	2x6 LESTER NO.2	HB101
P	BASE TRIM	#190 BOTTOM CLOSURE	MF113
Q	WAINSCOT	2x6 #2 WAINSCOT TRANS./ FLASHING	MF044, MF342

SIDE SECTION SCHEDULE

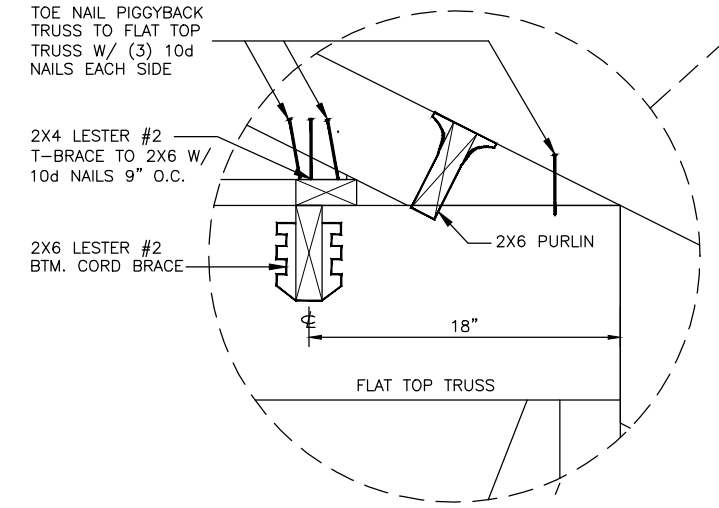
ID	Location	Description	Detail
A	COLUMN	FS888	FF223
C	WALL GIRT	2x8 LESTER NO.2	FF464
D	SILL PLATE	2x8 SYP NO.2 MCA-C	FF206, FF210
E	SOFFIT NAILER	2x10 DFL/SYP M-23/2400 MSR 1.8E	FF464
F	CLG PERM BLKG	2x4 SP NO.2	IF062
G	LINER TOP FILLER	2x8 LESTER NO.2	FF464
H	TRUSS	1-PLY 54-00-00 2x10 TC / 2x8 BC	
I	TRUSS TO COLUMN	(4) 1/4"x4.5" TRUSS-LOK Z, STD, UNI	HD631
J	INSERT BLOCK	(6) 4.5" TRUSS LOK SCREW	FF390
L	PURLIN	2x6 118-03 LESTER NO.2	GA122
M	EAVE NAILER	2x6BEV DFL NO.2	IF131
N	BTM CHD BRACE	2x6 118-07 SPF NO.2	GA172
O	GENERAL ROOF	UNI-RIB 26GA - G60 PVDF	JF044
P	GENERAL WALL	UNI-RIB 26GA - G60 PVDF	MF044
Q	SOFFIT	23.75" VENTED SOFFIT	IF642
R	EAVE TRIM	#175 STANDARD EAVE	JF154
S	EAVE TRIM	#672 FASCIA WITH STIFFENER	JF153
T	SOFFIT	#142 FJS 3/8THR SOFFIT	MF724
U	BASE TRIM	#190 BOTTOM CLOSURE	MF132
V	RIDGE TRIM	#153 RIDGECAP	OA050

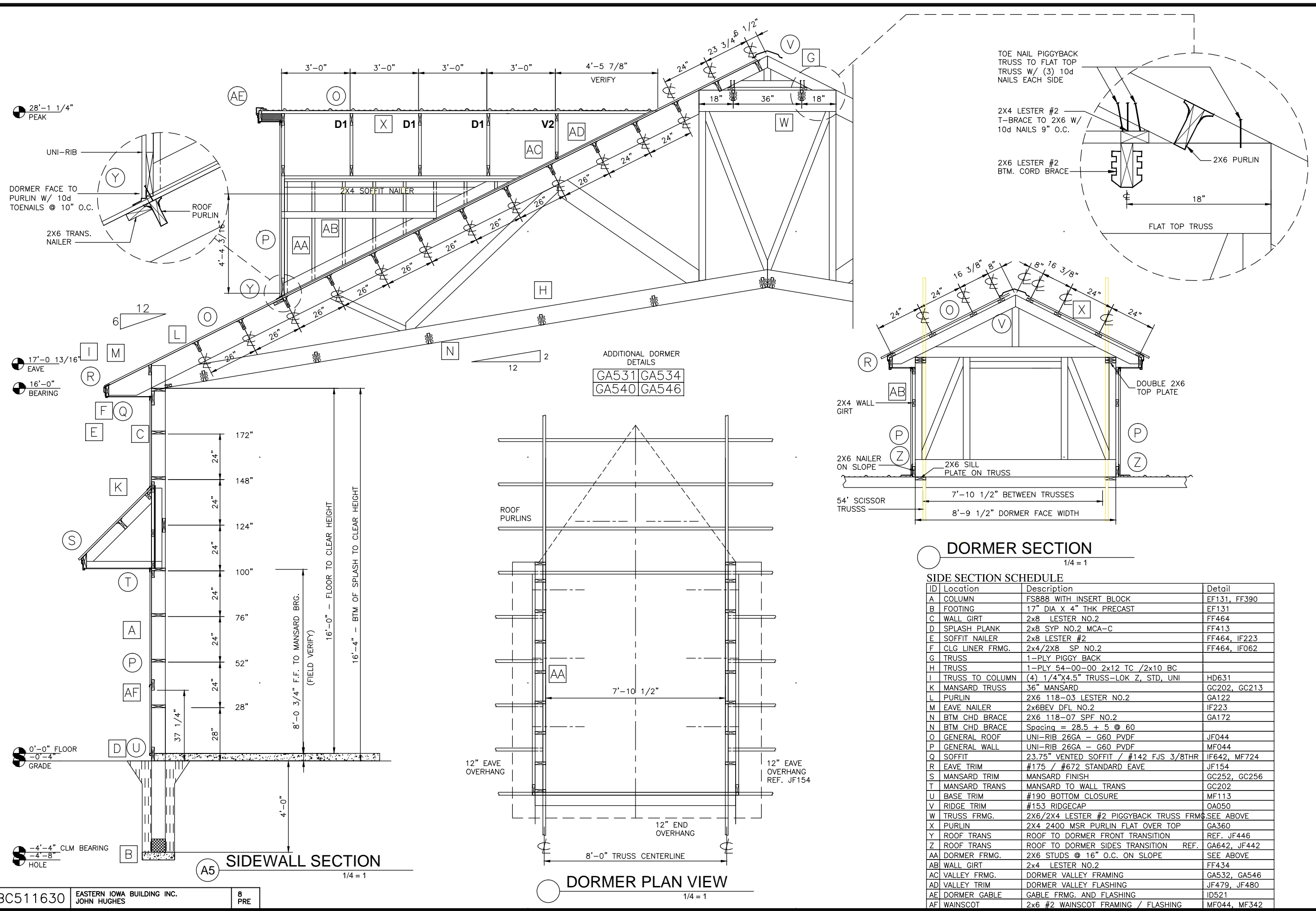


A4 ENDWALL SECTION
1/4 = 1



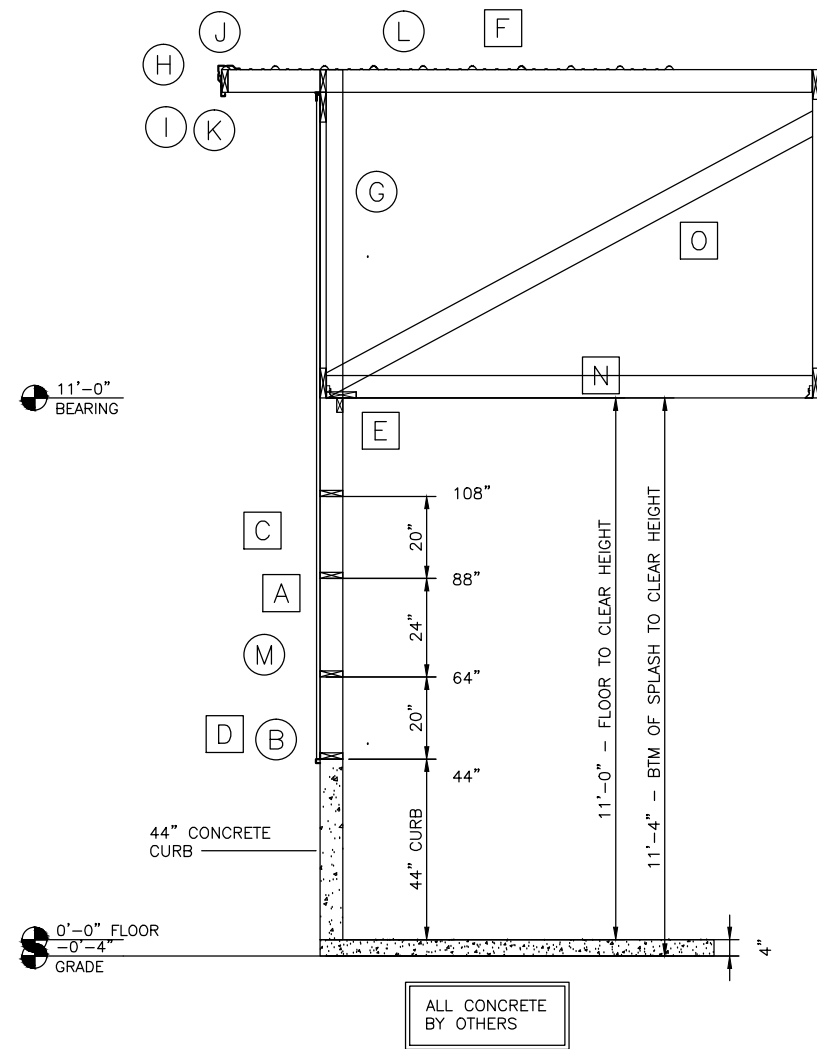
B4 SIDEWALL SECTION
1/4 = 1





SIDE SECTION SCHEDULE

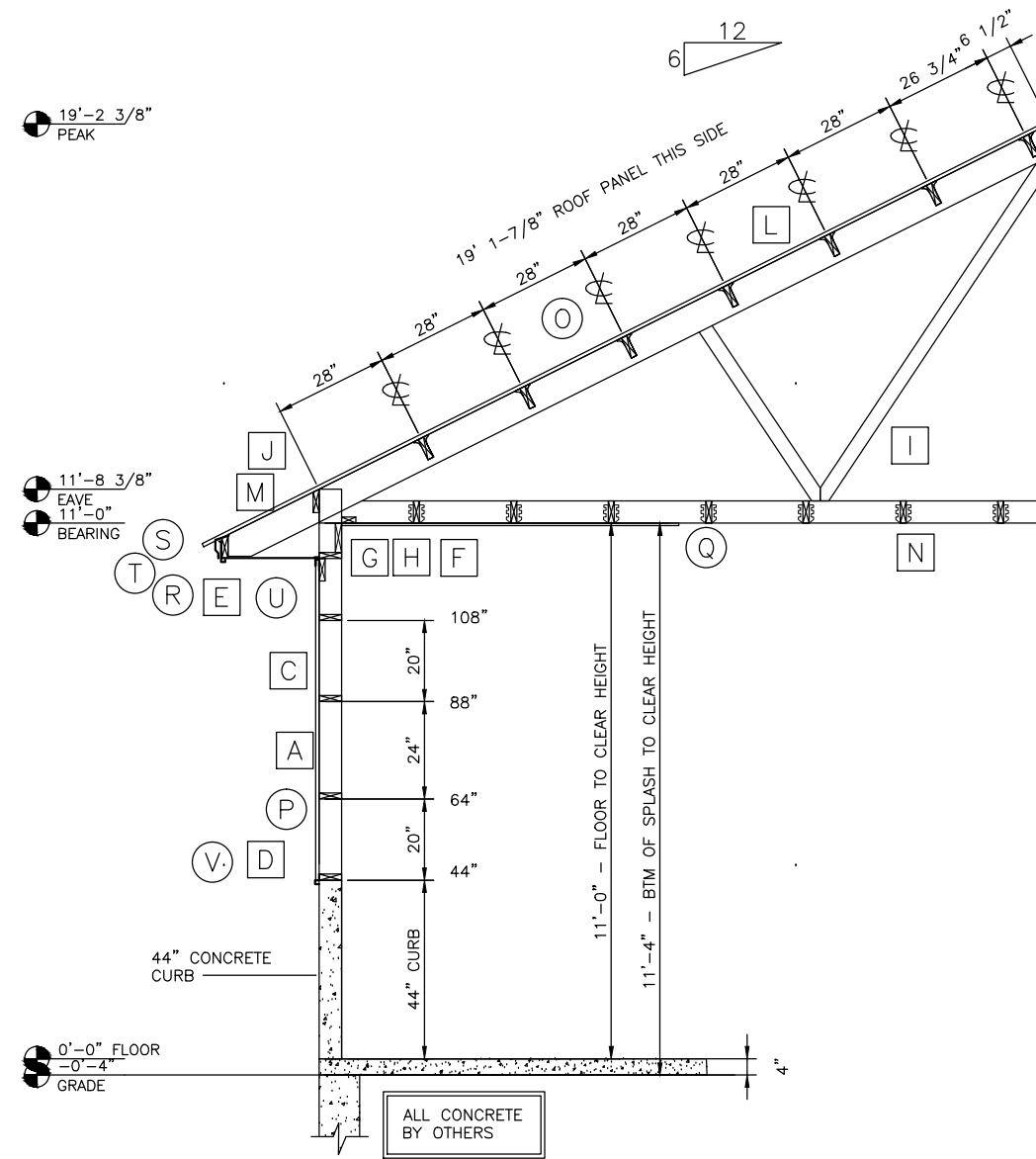
ID	Location	Description	Detail
A	COLUMN	FS888 WITH INSERT BLOCK	EF131, FF390
B	FOOTING	17" DIA X 4" THK PRECAST	EF131
C	WALL GIRT	2x8 LESTER NO.2	FF464
D	SPLASH PLANK	2x8 SYP NO.2 MCA-C	FF413
E	SOFFIT NAILER	2x8 LESTER #2	FF464, IF223
F	CLG LINER FRMG.	2x4/2x8 SP NO.2	FF464, IF062
G	TRUSS	1-PLY PIGGY BACK	
H	TRUSS	1-PLY 54-00-00 2x12 TC / 2x10 BC	
I	TRUSS TO COLUMN	(4) 1/4"x4.5" TRUSS-LOK Z, STD, UNI	HD631
K	MANSARD TRUSS	36" MANSARD	GC202, GC213
L	PURLIN	2X6 118-03 LESTER NO.2	GA122
M	EAVE NAILER	2x6BEV DFL NO.2	IF223
N	BTM CHD BRACE	2X6 118-07 SPF NO.2	GA172
N	BTM CHD BRACE	Spacing = 28.5 + 5 @ 60	
O	GENERAL ROOF	UNI-RIB 26GA - G60 PVDF	JF044
P	GENERAL WALL	UNI-RIB 26GA - G60 PVDF	MF044
Q	SOFFIT	23.75" VENTED SOFFIT / #142 FJS 3/8THR	IF642, MF724
R	EAVE TRIM	#175 / #672 STANDARD EAVE	JF154
S	MANSARD TRIM	MANSARD FINISH	GC252, GC256
T	MANSARD TRANS	MANSARD TO WALL TRANS	GC202
U	BASE TRIM	#190 BOTTOM CLOSURE	MF113
V	RIDGE TRIM	#153 RIDGECAP	OA050
W	TRUSS FRMG.	2X6/2X4 LESTER #2 PIGGYBACK TRUSS FRMG	SEE ABOVE
X	PURLIN	2X4 2400 MSR PURLIN FLAT OVER TOP	GA360
Y	ROOF TRANS	ROOF TO DORMER FRONT TRANSITION	REF. JF446
Z	ROOF TRANS	ROOF TO DORMER SIDES TRANSITION	REF. GA642, JF442
AA	DORMER FRMG.	2X6 STUDS @ 16" O.C. ON SLOPE	SEE ABOVE
AB	WALL GIRT	2x4 LESTER NO.2	FF434
AC	VALLEY FRMG.	DORMER VALLEY FRAMING	GA532, GA546
AD	VALLEY TRIM	DORMER VALLEY FLASHING	JF479, JF480
AE	DORMER GABLE	GABLE FRMG. AND FLASHING	ID521
AF	WAINSCOT	2x6 #2 WAINSCOT FRAMING / FLASHING	MF044, MF342



A6 ENDWALL SECTION
1/4 = 1

END SECTION SCHEDULE

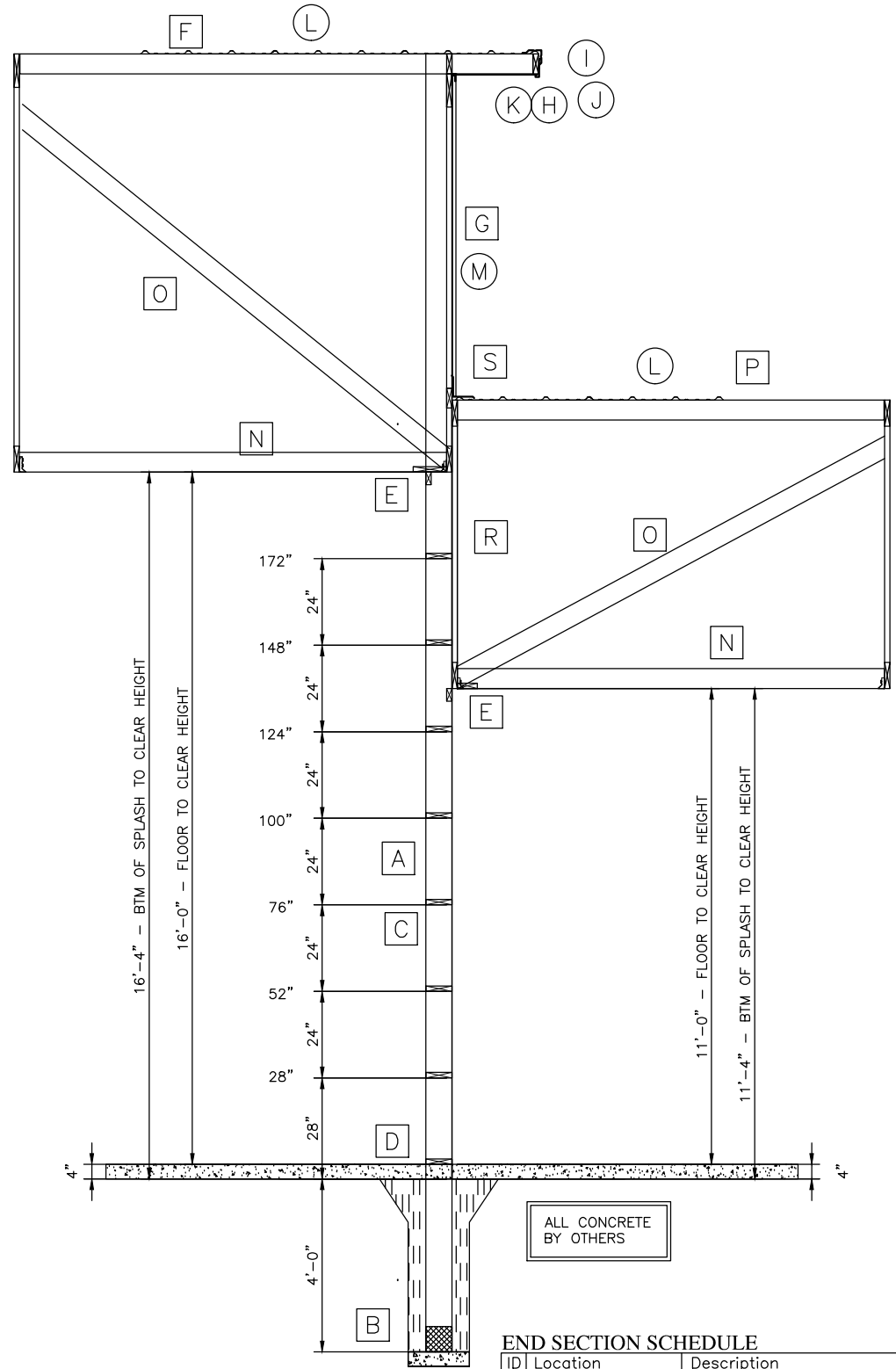
ID	Location	Description	Details
A	COLUMN	FE888	FF223, FF322
B	BASE TRIM	#190 BOTTOM CLOSURE	MF132
C	WALL GIRT	2x6 LESTER NO.2	FF464
D	SILL PLATE	2x6 SYP NO.2 MCA-C	FF206, FF210
E	CLG PERM BLKG	2x10 LESTER NO.2	IG334
F	PURLIN	2X6 142-05 M23/2400 MSR	IG235, IG246
G	GABLE TRUSS	1-PLY 54'-0" TRUSS 2x8 TC / 2x8 BC	FF302
H	RAKE TRIM	#672 FASCIA / #820 TRIM	JF346
I	SOFFIT	#142 FJS 3/8THR SOFFIT	MF724
J	RAKE TRIM	#823 RAKE AND CORNER	JF346
K	SOFFIT	23.75" VENTED SOFFIT	IF642
L	GENERAL ROOF	UNI-RIB 26GA - G60 PVDF	JF044
M	GENERAL WALL	UNI-RIB 26GA - G60 PVDF	MF044
N	BTM CHD BRACE	2X4 118-07 SPF NO.2 T	GA172
O	DIAG GBL BRACE	2x6 LESTER NO.2	HB100



B6 SIDEWALL SECTION
1/4 = 1

SIDE SECTION SCHEDULE

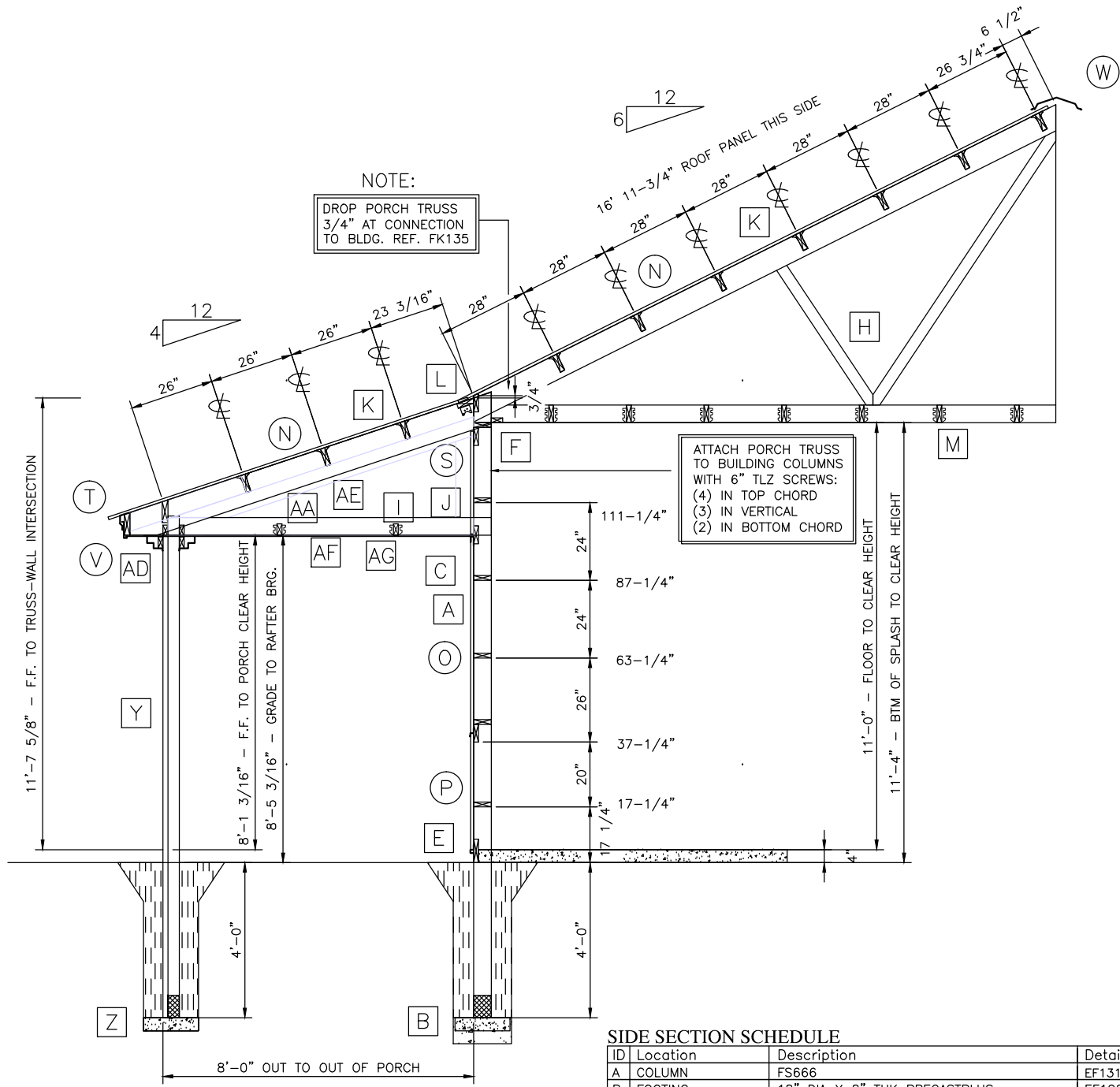
ID	Location	Description	Detail
A	COLUMN	FS666	FF223
C	WALL GIRT	2x6 LESTER NO.2	FF464
D	SILL PLATE	2x6 SYP NO.2 MCA-C	FF206, FF210
E	SOFFIT NAILER	2x6 LESTER #2	FF464
F	LINER TOP BLKG	2x10 DFL/SYP M-23/2400 MSR 1.8E	FF464, IF064
G	CLG PERM BLKG	2x4 SP NO.2	IF064
H	LINER TOP FILLER	2x6 LESTER NO.2	FF464, IF064
I	TRUSS	1-PLY 30-00-00 2x8 TC /2x6 BC	
J	TRUSS TO COLUMN	(4) 1/4"x4.5" TRUSS-LOK Z, STD, UNI	HD631
L	PURLIN	2X6 M23/2400 MSR	GA122, GA142
M	EAVE NAILER	2x6BEV DFL NO.2	IF223
N	BTM CHD BRACE	2X6 118-07 SPF NO.2	GA172
N	BTM CHD BRACE	Spacing = 15 @ 24	
O	GENERAL ROOF	UNI-RIB 26GA - G60 PVDF	JF044
P	GENERAL WALL	UNI-RIB 26GA - G60 PVDF	MF044
Q	CEILING	5/8" FIRE RATED GWB BY OTHERS	
R	SOFFIT	23.75" VENTED SOFFIT	IF642
S	EAVE TRIM	#175 EAVE TRIM	JF154
T	EAVE TRIM	#672 FASCIA WITH STIFFENER	JF153, JF154
U	SOFFIT	#142 FJS 3/8THR SOFFIT	MF724
V	BASE TRIM	#190 BOTTOM CLOSURE	MF132



A7 BUILDING HIGH LOW SECTION
1/4 = 1

ID	Location	Description	Details
A	COLUMN	FE888	EF131, FF322
B	FOOTING	17" DIA X 4" THK PRECAST	EF131
C	WALL GIRT	2x8 LESTER NO.2	FF464
D	SILL PLATE	2x8 SYP NO.2 MCA-C	FF206, FF210
E	CLG PERM BLKG	2x6 LESTER NO.2	IG334
F	PURLIN	2x6 142-05 LESTER NO.2	IG235, IG246
G	GABLE TRUSS	1-PLY 54'-0" TRUSS 2x12 TC / 2x10 BC	FF302
H	RAKE TRIM	#672 FASCIA / #171 TRIM	IG625, JF346
I	SOFFIT	#142 FJS 3/8THR SOFFIT	MF724
J	RAKE TRIM	#823 RAKE AND CORNER	JF346
K	SOFFIT	23.75" VENTED SOFFIT	IF642
L	GENERAL ROOF	UNI-RIB 26GA - G60 PVDF	JF044
M	GENERAL WALL	UNI-RIB 26GA - G60 PVDF	MF044
N	BTM CHD BRACE	2X4 118-07 SPF NO.2 T	GA172
O	DIAG GBL BRACE	2x6 LESTER NO.2	HB100
P	PURLIN	2X6 118-03 LESTER NO.2	GA122, GA142
R	TRUSS	1-PLY 30-00-00 2x8 TC /2x6 BC	FF302
S	ROOF TO WALL	ROOF TO WALL FRMG. AND FLASHING	GA642, JF442

ALL CONCRETE BY OTHERS



B7 SIDEWALL SECTION
1/4 = 1

NOTE:
DROP PORCH TRUSS 3/4" AT CONNECTION TO BLDG. REF. FK135

ATTACH PORCH TRUSS TO BUILDING COLUMNS WITH 6" TLZ SCREWS:
(4) IN TOP CHORD
(3) IN VERTICAL
(2) IN BOTTOM CHORD

ID	Location	Description	Detail
A	COLUMN	FS666	EF131
B	FOOTING	18" DIA X 8" THK PRECASTPLUS	EF122
C	WALL GIRT	2x6 LESTER NO.2	FF464
E	SPLASH PLANK	2x8 SYP NO.2 MCA-C	FF413
F	LINER FRMG.	2x4/2X6 SP NO.2	FF464, IF062
H	TRUSS	1-PLY 30-00-00 2x8 TC /2x6 BC	
I	TRUSS TO COLUMN	(4) 1/4"x4.5" TRUSS-LOK Z, STD, UNI	HD631
J	INSERT BLOCK	(6) 4.5" TRUSS LOK SCREW	FF390
K	PURLIN	2X6 M23/2400 MSR	GA122
L	EAVE NAILER	2x6BEV DFL NO.2	IF131
M	BTM CHD BRACE	2X6 118-07 SPF NO.2	GA172
M	BTM CHD BRACE	Spacing = 15 @ 24	
N	GENERAL ROOF	UNI-RIB 26GA - G60 PVDF	JF044
O	GENERAL WALL	UNI-RIB 26GA - G60 PVDF	MF044
P	WAINSCOT WALL	UNI-RIB 26GA - G60 PVDF	MF044
S	ROOF TRANS. TRIM	ROOF SLOPE TRANSITION	JF407, JF417
T	EAVE TRIM	#170 / #672 STANDARD EAVE	JF153, MF408
V	SOFFIT	#146 REVERSED F TRIM	MF409
W	RIDGE TRIM	#153 RIDGECAP	QA050
X	ROOF TRANS. FRMG.	PORCH TRANSITION FRAMING	FK135
Y	PORCH COLUMN	f6FS444 W/ METAL COVER	FF389, MF433
Z	PORCH FOOTING	17" DIA X 4" THK PRECAST FOOTING	EF131
AA	PORCH TRUSS	2X10 TC OVER 2X6 BC	
AD	TRUSS TO CLM	(4) 4.5" TRUSS LOK SCREWS	FK156
AE	PORCH PURLIN	2X6 M23/2400 MSR PURLIN	GA122
AF	PORCH TRUSS	PORCH GABLE TRUSS	FK423, FL390
AG	PORCH CEILING	VENTED SOFFIT CEILING & CROWN MOULDING	MF481, MF482
AH	PORCH CEILING	2X4 BOTTOM CHORD BRACE @ 36" O.C.	GA172, MF481

DATE: 1/31/2013 SHEET 07 OF 21
 JOB-NUMBER 511630
 DRAWN BY: KEN CHAPMAN
 CHECKED BY:
 REV NO.:
 JOB DESCRIPTION: 54X80X16 / 30X30X11 UNI-I / UNI-II
 CUSTOMER: JOHN HUGHES 2114 WILSON AVE. SW. CEDAR RAPIDS, IA 52404
 DEALER: EASTERN IOWA BUILDING INC. 5907-4TH STREET SW CEDAR RAPIDS, IA 52404
 LESTER BUILDINGS
 LESTER PRAIRIE, MN 800-826-4439...Ext.5000+
 CHARLESTON, IL 800-826-4439...Ext.3100+
 CLEARBROOK, VA 800-826-4439...Ext.6000+