

OPENING SCHEDULE

ID	MODEL	COLOR	NOMINAL	ROUGH	FRAME	FINISH
B1	WLK DOOR 5100 22X36 LITE		36x80	40x81		
A1	WLK DOOR 5100 22X36 LITE		36x80	40x81		
F1	WINDOW VINYL CASEMENT THERMA	B. Wht.	48x36	47.5x35.75		
C1	MONOFOLD FBO		480x240	480x240		
G1	16' HIGH OVERHEAD DOOR OPENI		240x192		NA	LK424
E1	WLK DOOR 5100 22X36 LITE		36x80	40x81	NA	LK424
D1	MONOFOLD FBO		360x240	360x240	NA	LK424

COLUMN SCHEDULE

ID	PART	SHAPE	LENGTH	BASE	FOOTING	TYPE	YARDS/BAGS	NOTES
1	691197	FS888	28'-0"	-55	4 x 17	PRECAST	0	EF131
2	692258	FE888	28'-0"	-55	4 x 17	PRECAST	0	EF131
3	692230	FE666	30'-0"	-52	4 x 17	PRECAST	0	EF131
4	C007	f6FE0000	34'-0"	-64	4 x 17	PRECAST	0	EF131
5	C008	f6FE0000	34'-0"	-64	4 x 17	PRECAST	0	EF131
6	692228	FE666	28'-0"	-52	4 x 17	PRECAST	0	EF131
7	C009	f8FE00000	32'-0"	-64	4 x 17	PRECAST	0	EF131
8	C010	f8FE00000	32'-0"	-64	4 x 17	PRECAST	0	EF131
9		P8FS88J8	28'-0"	-55	8 x 24	POURED	0.0776	EF132
10		J8FS888P8	28'-0"	-55	8 x 24	POURED	0.0776	EF132



DEALER INFO.
 Castlerock Construct & Con
 PO Box 68
 DeSmet, SD 57231

CUSTOMER INFO.

BUILDING DESCRIPTION
 66'-0"x120'-1"x20'-0"
 U1A
 QP122012

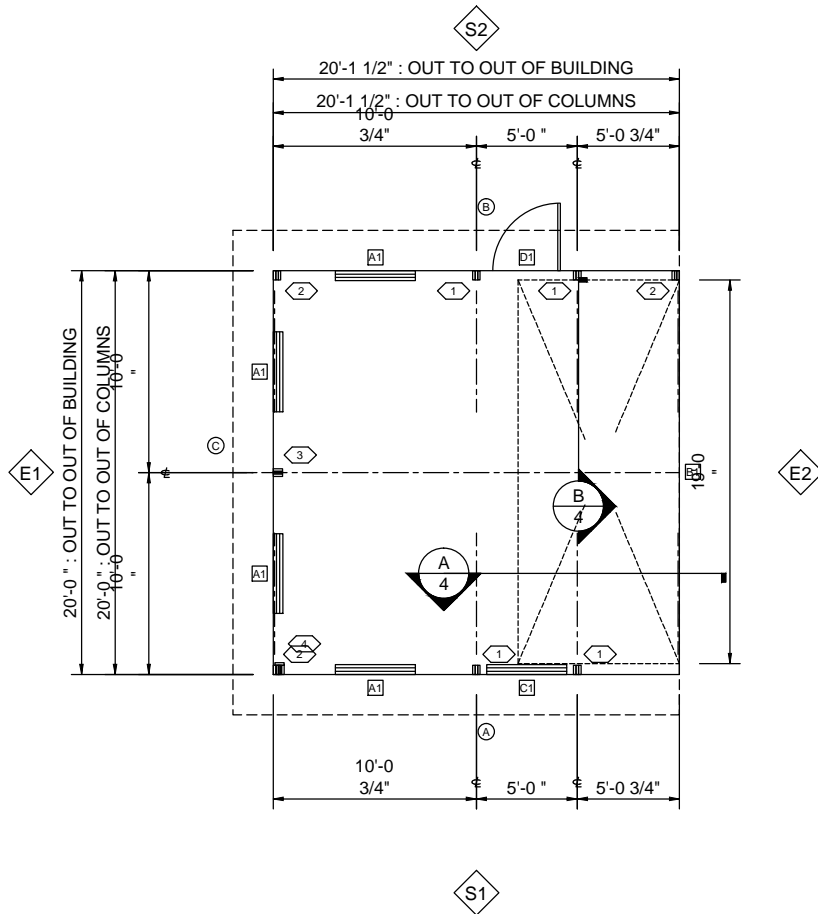
Customer Approval

(Initials)
 DATE: 2/13/2013

PROJ: Q27A-15079-04-05

PROPOSAL DRAWINGS ONLY
 Not Intended for Construction Purposes

* Not To Scale *



OPENING SCHEDULE

ID	MODEL	COLOR	NOMINAL	ROUGH	FRAME	FINISH
B1	OVERHEAD DOOR OPENING - CUST		22x96		NA	LK424
A1	WINDOW VINYL CASEMENT THERMA	B Wht	48x36	47.5x35.75	KB431, KC424	KB471
C1	WINDOW VINYL CASEMENT THERMA	B Wht	48x36	47.5x35.75	KB431, KC424	KB471
D1	WLK DOOR 5100 22X36 LITE		36x80	40x81	KC431, KC430	KC471, KC470

COLUMN SCHEDULE

ID	PART	SHAPE	LENGTH	BASE	FOOTING	TYPE	YARDS/BAGS	NOTES
1	691166	FS666	16'-0"	-52	4 x 17	PRECAST	0	EF131
2	692216	FE666	16'-0"	-52	4 x 17	PRECAST	0	EF131
3	C004	FE666	20'-0"	-52	4 x 17	PRECAST	0	EF131
4a	C005	FE666	16'-0"	-52	4 x 17	PRECAST	0	EF131
4b	C006	FE6	16'-0"	-52	4 x 17	PRECAST	0	EF131

Floor Plan



DEALER INFO.
 Castlerock Construct & Con
 PO Box 68
 DeSmet, SD 57231

CUSTOMER INFO.

BUILDING DESCRIPTION
 20'-0"x20'-1"x10'-0"
 U1A
 QP122012

Customer Approval

 (Initials)
 DATE: 2/13/2013

PROJ: Q27A-15082-00-02
 PROPOSAL DRAWINGS ONLY
 Not Intended for Construction Purposes
 * Not To Scale *