

OPENING SCHEDULE

ID	MODEL	COLOR	NOMINAL	ROUGH	FRAME	FINISH
C1	8' HIGH OVERHEAD DOOR OPENIN		96x96		NA	101675
A1	WLK DOOR 5100 SOLID		36x80	40.3125x81.125	KC434.KC430	102035
B1	WINDOW VINYL SLIDER THERMAL	B Wht	48x36	47.5x35.75	KB434.KC427	102455
D1	OVERHEAD DOOR OPENING - CUST		192x108		NA	101675

COLUMN SCHEDULE

COLUMN		FOOTING				ANCHOR					
ID	PART	SHAPE	LENGTH	BASE	SIZE	TYPE	YDS/BGS	DET	TYPE	BRS/BLTS	DET
1	691166	FS666	16'-0"	-49	4 x 17	PRECAST	0	EF201	BLOCK	0	EF211
2	692216	FE666	16'-0"	-49	4 x 17	PRECAST	0	EF201	BLOCK	0	EF211
3	692218	FE666	18'-0"	-49	4 x 17	PRECAST	0	EF201	BLOCK	0	EF211
4a	C005	FE666	16'-0"	-49	4 x 17	PRECAST	0	EF201	BLOCK	0	EF211
4b	C014	FE666	14'-0"	-49	4 x 17	PRECAST	0		BLOCK	0	
5a	C003	FE666	18'-0"	-49	8 x 24	PRECASTPLUS	3	EF201	BLOCK	0	EF211
5b	C015	FE666	14'-0"	-49	8 x 24	PRECASTPLUS	3		BLOCK	0	
5c	C014	FE666	14'-0"	-49	8 x 24	PRECASTPLUS	3		BLOCK	0	
6a	C005	FE666	16'-0"	-49	8 x 24	PRECASTPLUS	3	EF201	BLOCK	0	EF211
6b	C016	FE6666	14'-0"	-49	8 x 24	PRECASTPLUS	3		BLOCK	0	

FLOOR PLAN



DEALER INFO.
Prairie Building Systems Inc.

CUSTOMER INFO.

BUILDING DESCRIPTION
18'-0"x16'-1"x9'-0"
Uni-Frame Embedded
QP031716

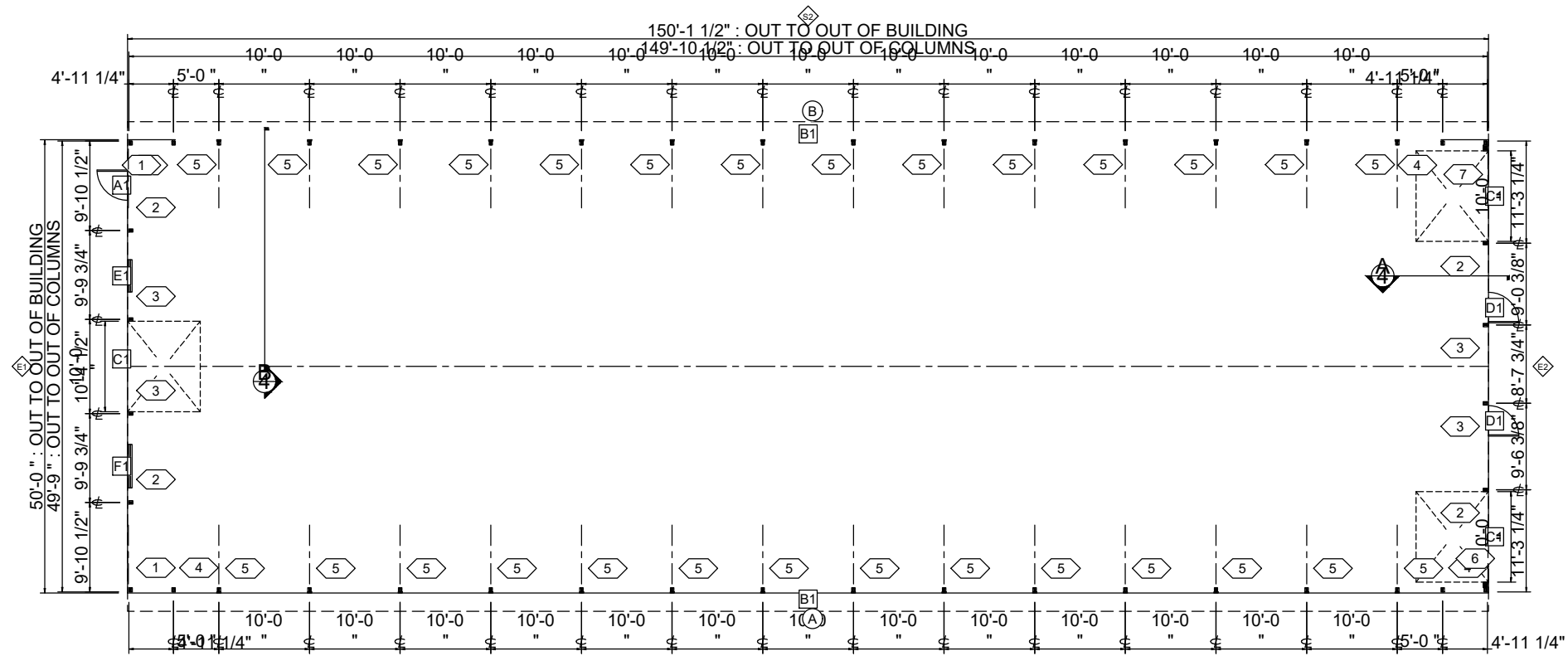
Customer Approval

(Initials)
DATE: 5/2/2016

PROJ: Q09A-15857-01-01
PROPOSAL DRAWINGS ONLY
Not Intended for Construction Purposes

The information presented in this drawing is based on a preliminary design using the input provided. The final design is subject to Lester Engineering review.

* Not To Scale *



OPENING SCHEDULE

ID	MODEL	COLOR	NOMINAL	ROUGH	FRAME	FINISH
D1	WLK DOOR 5100 SOLID		36x80	40.3125x81.125	KC434, KC430	102035
A1	WLK DOOR 5100 SOLID		36x80	40.3125x81.125	KC434, KC430	102035
B1	CUSTOM SIZE CURTAIN OPENING		1680x36	1675.5x34		
C1	8' HIGH OVERHEAD DOOR OPENIN		120x96		NA	101675
E1	WINDOW - FBO		43x43		KB434, KC427	102455
F1	WINDOW - FBO		57.5x57.5		KB434, KC427	102455

COLUMN SCHEDULE

COLUMN		FOOTING				ANCHOR					
ID	PART	SHAPE	LENGTH	BASE	SIZE	TYPE	YDS/BGS	DET	TYPE	BRS/BLTS	DET
1	692214	FE666	14'-0"	-49	4 x 17	PRECAST	0	EF201	BLOCK	0	EF211
2	692218	FE666	18'-0"	-49	4 x 17	PRECAST	0	EF201	BLOCK	0	EF211
3	692222	FE666	22'-0"	-49	4 x 17	PRECAST	0	EF201	BLOCK	0	EF211
4	C003	FS666	14'-0"	-49	4 x 17	PRECAST	0	EF201	BLOCK	0	EF211
5	C004	f6FS666	14'-0"	-52	4 x 17	PRECAST	0	EF201	BLOCK	0	EF211
6a	C005	FE666	18'-0"	-49	8 x 24	PRECASTPLUS	3	EF201	BLOCK	0	EF211
6b	C006	FE666	14'-0"	-49	8 x 24	PRECASTPLUS	3		BLOCK	0	
6c	C007	FE666	14'-0"	-49	8 x 24	PRECASTPLUS	3		BLOCK	0	
7a	C005	FE666	14'-0"	-49	8 x 24	PRECASTPLUS	3	EF201	BLOCK	0	EF211
7b	C007	FE666	14'-0"	-49	8 x 24	PRECASTPLUS	3		BLOCK	0	
7c	C006	FE666	14'-0"	-49	8 x 24	PRECASTPLUS	3		BLOCK	0	



DEALER INFO.
Prairie Building Systems Inc.

CUSTOMER INFO.

BUILDING DESCRIPTION
50'-0"x150'-1"x8'-0"
Uni-Frame Embedded
QP031716

Customer Approval

DATE: 5/2/2016

PROJ: Q09A-15843-02-01
PROPOSAL DRAWINGS ONLY
Not Intended for Construction Purposes
The information presented in this drawing is based on a preliminary design using the input provided. The final design is subject to Lester Engineering review.
* Not To Scale *